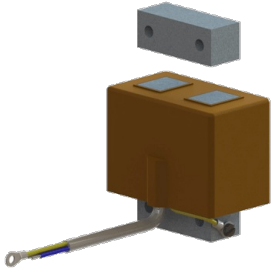


# REOVIB WI 111

*AC-Magnet*



## Unique Selling Point

- Optimal size/performance ratio
- Good adjustability
- Safe mounting by means of solid base plate/mountings through core
- Compact and robust structure

## Description

Applications:

Packaging + weighing industries for handling and sorting processes; automation using drives with vibrating systems.

The tractive power values given in the table refer to warmed-up condition and 95% of the rated voltage with a reference temperature of 35°C.

Max. tractive power  $F$  = magnetic force with rated air-gap in non-vibrating condition.

The VA values were determined with rated air-gap in non-vibrating condition and represent a max. limit for the temperature rise according to test arrangement conforming to VDE 0580.

The compound will be provided in grey with connection over half-wave rectifiers.

## Technical Data

- Max. Nominal air gap : 3 mm
- Power at 3000 1/min : 15 - 350 VA
- Power at 6000 1/min : 15 - 350 VA

## Typical applications

- Packaging industry and weighing sector for feeding and sorting processes
- Automation process and assembly equipment which utilises electromagnetic drives

# REOVIB WI 111

*AC-Magnet*

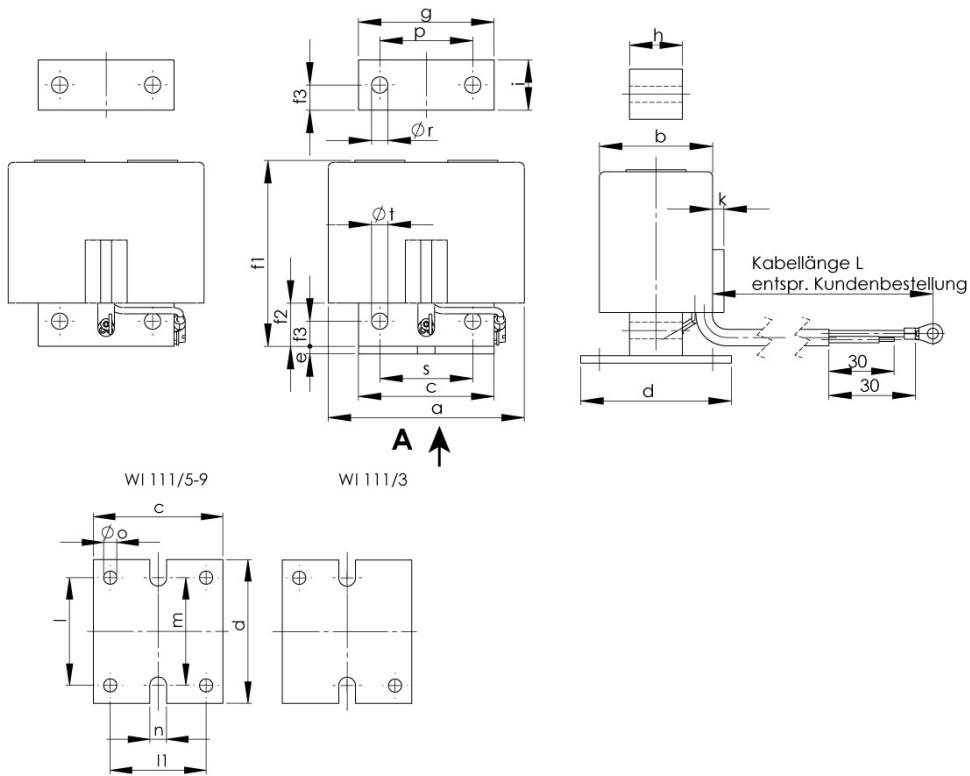
## Technical data

Types	Max. rated air gap [mm]	Power at 3000 1/min [VA] und 6000 1/min [VA]	Rated current = thermal rated current at 230V [A]	Peak tensile force at nominal air gap [N]	Weight [kg]	
					Magnet	Armature
REOVIB WI 111/3	2	15	0,065	5	0,135	0,025
REOVIB WI 111/5	1	60	0,26	38	0,405	0,085
REOVIB WI 111/6	2,5	70	0,3	24	0,58	0,11
REOVIB WI 111/7	3	140	0,6	45	1,15	0,165
REOVIB WI 111/9	3	350	1,5	150	1,98	0,33
Compatible REOVIB devices: REOVIB SMART, REOVIB RTS, REOVIB MTS, REOVIB MFS						

# REOVIB WI 111

AC-Magnet

## Dimension drawing



## Dimensions

Type	a	b	c	d	e	f1	f2	f3	g	h	i	k	l	l1	m	ø n	ø o	p	ø r	s	ø t
REOVIB WI 111/3	44	26	30	32	2	42	9	5	30	12	10	4	22	20	22	4,2	4,4	-	4,4	20	3,6
REOVIB WI 111/5	61,5	31,5	45	50	3	63	14	7,5	45	16	15	3	43	35	36	4,2	4,4	15	5,1	28	5,1
REOVIB WI 111/6	64	42	45	50	3	63	14	7,5	45	20,5	15	-	43	35	36	4,2	4,4	15	5,1	28	5,1
REOVIB WI 111/7	78	47	54	60	3	77	17	10	54	21	20	4,5	45	40	45	7	5,5	20	6,5	37	6,5
REOVIB WI 111/9	90	56	66	83	3	88	19	11	66	32,5	22	-	66	50	66	7	6,4	44	8,1	44	8,1