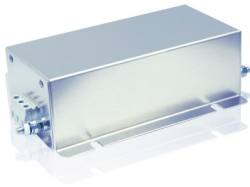


CNW 114/690

Three-phase mains filters (3 lines)



Unique Selling Point

- compact construction
- easy installation
- low temperature rise
- touch-proof terminals
- very good attenuation in a wide frequency spectrum
- IT-versions possible
- UL approval for CNW 114/8 up to CNW 114/600 A (doesn't apply to the 690 V version)

Description

Applications: Frequency converters for motor drives, wind power installations and power supply units

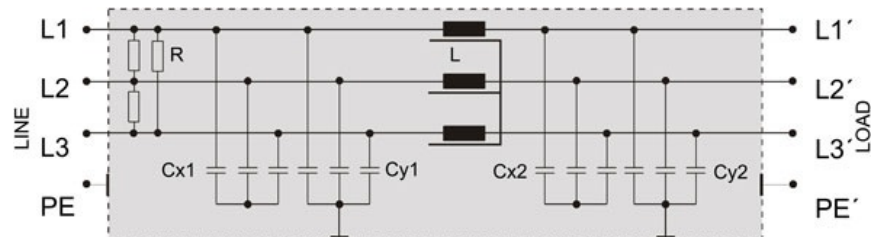
- Conforming to: VDE 0565-3 / IEC 950 / UL 1283
- Test voltage: L-L 2100 V, DC 1s, L-PE 2700 V, DC 1s
- Overload: 1,5 x I 1 min/h
- Climatic category: DIN IEC 68 Teil 1 25/085/21

Technical Data

- Nominal Voltage : 690 V
- Rated current : 80 - 1200 A

When electronic components are panel-mounted in a cabinet, in the most of the cases the same circuits with different power are required. To avoid permanent modifications of the apertures, several power ranges should ideally be combined. The filters of this series, within the most important power range, have equal fixing dimensions, so that the filters can be replaced.

Circuit example



CNW 114/690

Three-phase mains filters (3 lines)

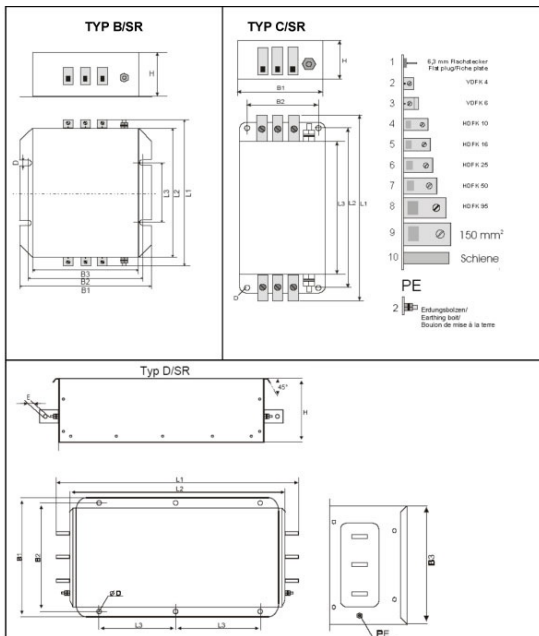
Technical data

| Type | Rated voltage [V] | Rated current [A] | Leakage current [mA] | Cx [μF] | Cy [nF] | L [mH] | R [kOhm] |
|--------------|----------------------|----------------------|-------------------------|------------|------------|-----------|-------------|
| CNW 114/8 | | 3x8 | <16 | 1,0 | 0,2 | 7,6 | 560 |
| CNW 114/16 | | 3x16 | <16 | 2,5 | 1,6 | 5,2 | 560 |
| CNW 114/25 | | 3x25 | <180 | 2,5 | 1,6 | 2,5 | 560 |
| CNW 114/36 | | 3x36 | <180 | 2,5 | 1,6 | 1,5 | 560 |
| CNW 114/50 | | 3x50 | <180 | 2,5 | 1,6 | 0,9 | 560 |
| CNW 114/64 | | 3x64 | <180 | 2,5 | 1,6 | 0,9 | 560 |
| CNW 114/80 | 3 x | 3x80 | <200 | 3,7 | 2,4 | 0,8 | 560 |
| CNW 114/110 | 690 | 3x110 | <200 | 3,7 | 2,4 | 0,5 | 560 |
| CNW 114/180 | | 3x180 | <220 | 3,7 | 2,4 | 0,5 | 560 |
| CNW 114/280 | | 3x280 | <260 | 7,2 | 4,6 | 0,3 | 560 |
| CNW 114/300 | | 3x300 | <260 | 7,2 | 4,6 | 0,3 | 560 |
| CNW 114/450 | | 3x450 | <760 | 7,6 | 4,75 | 0,11 | 560 |
| CNW 114/600 | | 3x600 | <760 | 7,6 | 4,75 | 0,11 | 560 |
| CNW 114/900 | | 3x900 | <760 | 7,6 | 4,75 | 0,05 | 560 |
| CNW 114/1200 | | 3x1200 | <760 | 7,6 | 4,75 | 0,05 | 560 |

CNW 114/690

Three-phase mains filters (3 lines)

Dimensions



| Type | Housing | Connection | PE-Connection | B1 [mm] | B2 [mm] | B3 [mm] | D [mm] | E [mm] | H [mm] | L1 [mm] | L2 [mm] | L3 [mm] |
|--------------|---------|-------------------------------|---------------------|---------|---------|---------|--------|--------|--------|---------|---------|---------|
| CNW 114/8 | B/SR | Terminals 4 mm ² | Earthing bolt (M6) | 115 | 100 | 85 | 6,2 | - | 60 | 202 | 180 | 115 |
| CNW 114/16 | B/SR | Terminals 4 mm ² | Earthing bolt (M6) | 150 | 136 | 120 | 6,2 | - | 65 | 222 | 200 | 115 |
| CNW 114/25 | B/SR | Terminals 6 mm ² | Earthing bolt (M6) | 150 | 136 | 120 | 6,2 | - | 65 | 229 | 200 | 115 |
| CNW 114/36 | B/SR | Terminals 10 mm ² | Earthing bolt (M6) | 150 | 136 | 120 | 6,2 | - | 65 | 229 | 200 | 115 |
| CNW 114/50 | B/SR | Terminals 10 mm ² | Earthing bolt (M6) | 150 | 136 | 120 | 6,2 | - | 65 | 229 | 200 | 115 |
| CNW 114/64 | B/SR | Terminals 16 mm ² | Earthing bolt (M6) | 150 | 136 | 120 | 6,2 | - | 65 | 238 | 200 | 115 |
| CNW 114/80 | C/SR | Terminals 25 mm ² | Earthing bolt (M10) | 170 | 130 | - | 8,5 | - | 90 | 400 | 373 | 350 |
| CNW 114/110 | C/SR | Terminals 50 mm ² | Earthing bolt (M10) | 170 | 130 | - | 8,5 | - | 90 | 400 | 373 | 350 |
| CNW 114/180 | C/SR | Terminals 95 mm ² | Earthing bolt (M10) | 180 | 156 | - | 10,0 | - | 115 | 510 | 470 | 360 |
| CNW 114/280 | C/SR | Terminals 150 mm ² | Earthing bolt (M10) | 260 | 220 | - | 12,0 | - | 130 | 700 | 660 | 530 |
| CNW 114/300 | C/SR | Terminals 150 mm ² | Earthing bolt (M10) | 260 | 220 | - | 12,0 | - | 130 | 700 | 660 | 530 |
| CNW 114/450 | D/SR | Bars (25x8) | Earthing bolt (M12) | 300 | 275 | 250 | 9,0 | 10,5 | 160 | 610 | 516 | 210 |
| CNW 114/600 | D/SR | Bars (30x8) | Earthing bolt (M12) | 300 | 275 | 250 | 9,0 | 10,5 | 160 | 630 | 516 | 210 |
| CNW 114/900 | D/SR | Bars (50x10) | Earthing bolt (M12) | 300 | 275 | 250 | 9,0 | 13,0 | 160 | 716 | 516 | 210 |
| CNW 114/1200 | D/SR | Bars (60x10) | Earthing bolt (M12) | 300 | 275 | 250 | 9,0 | 13,0 | 160 | 716 | 516 | 210 |

CNW 114/690

Three-phase mains filters (3 lines)

Insertion loss

