

# REOLAB 220

*Three-phase AC high-current supply*



## Unique Selling Point

- clean sinusoidal output current over the entire adjustment range
- low losses and minimum stray fields due to the toroidal cores of the high-current transformers
- large internal diameters of the high-current transformers
- no EMC problems
- current set-point adjusted manually or automatically
- control error approx 1%
- fast regulation of voltage variations
- true rms measurements with the digital meters
- external operation via Profibus possible

## Description

Applications:

REO high-current supply systems are ideal test and development units for power test bays and quality assurance in the cable industry, e.g. for potheads.

Control section:

- power switch with magnetic and thermal cut-out in the mains input circuit
- main contactor for operational switching of transformers
- emergency-off switch and safety loop
- timer for the main contactor
- push-button and indicator lamp (22 mm Ø) for operation
- 10-turn set-point potentiometer for current adjustment in every phase
- output protected against short-circuit and overload
- digital meters for V & A in the AC/DC output (96 x 48 mm format)
- electronic constant-current control for individual phases

High-current section:

- high-current toroidal transformers on a base frame, encapsulated for outdoor installation
- high-current converter for outdoor installation

## Technical Data

- Input voltage : 3 x 400 V
- Output voltage : 3 x 0 - 10 V
- Output Current : 3 x 10.000 A

Your contact:

+49-(0)2 12-88 04-0 • info@reo.de



# REOLAB 220

*Three-phase AC high-current supply*

Type	Rated voltage [V]	Rated power [kVA]	Output voltage [V] AC	Output current [A]	Connection
REOLAB 220/21	3 x 400 + 10% - 10% 3 x 230 against neutral (N) 50 / 60Hz	3 x 0 - 7 = 0 - 21	3 x 0 - 10 V	3 x 10.000	star/ open open open

Regulation time: about 20 sec for the full control range

Surface finish: RAL 7035 or 7032

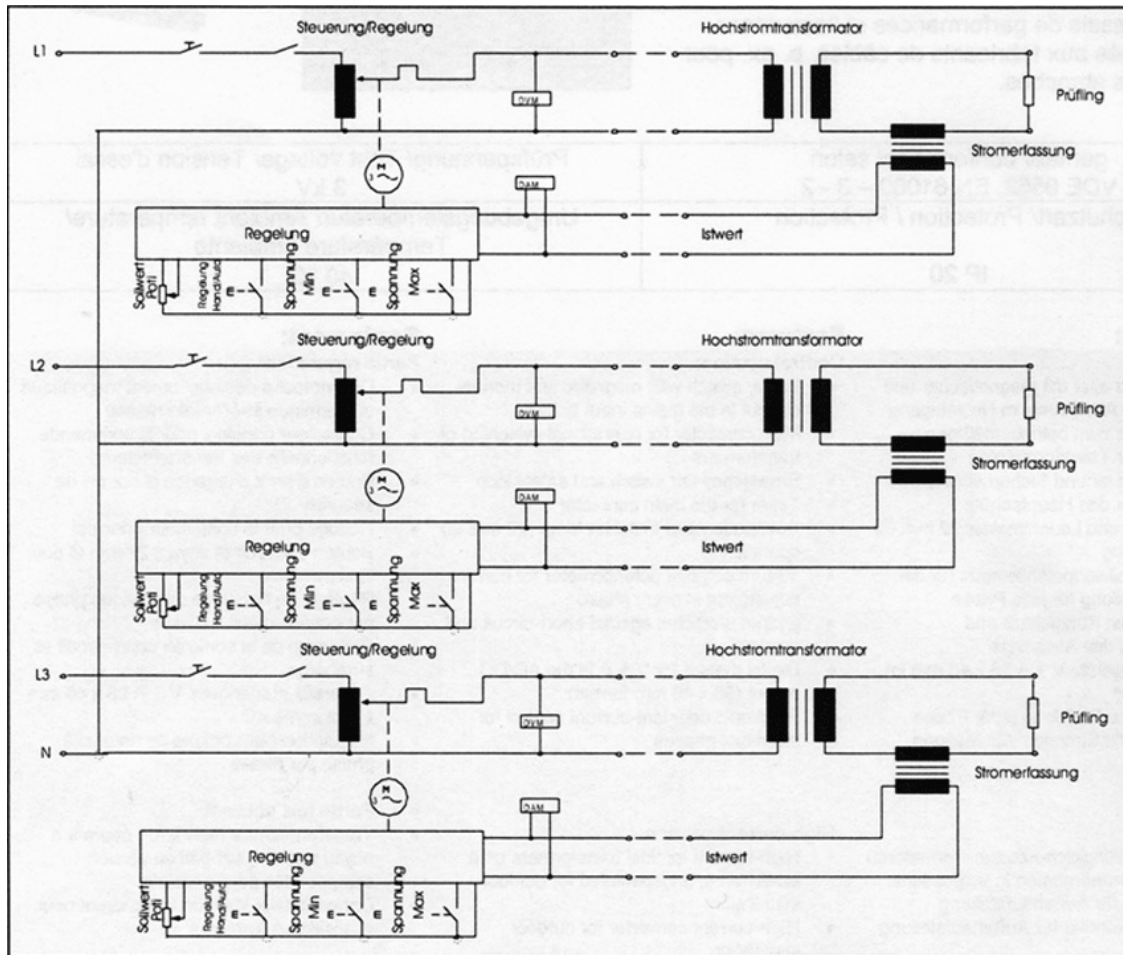
Max. adm. ambient temperature: 40 °C

Natural cooling

# REOLAB 220

Three-phase AC high-current supply

Circuit diagram



Options

- PLC with PowerFormer
- coupling module for REODATA
- DP 59211 interface to Profibus

# REOLAB 220

Three-phase AC high-current supply

## Dimension drawing

